



PROLEARN

European Commission Sixth Framework Project (IST-507310)

Deliverable D12.14

Conzilla-based Conceptual Model of the PROLEARN Roadmapping Process, Version 2 (of D12.7)

www.conzilla.org/wiki/Online/RM

<i>Editor</i>	<i>Ambjörn Naeve</i>
<i>Work Package</i>	<i>WP12 Roadmapping</i>
<i>Status</i>	<i>Version 2 (of D12.7)</i>
<i>Date</i>	<i>2007-01-31</i>

The PROLEARN Consortium

1. Universität Hannover, Learning Lab Lower Saxony (L3S), Germany
2. Deutsches Forschungszentrum für Künstliche Intelligenz GmbH (DFKI), Germany
3. Open University (OU), UK
4. Katholieke Universiteit Leuven (K.U.Leuven) / ARIADNE Foundation, Belgium
5. Fraunhofer-Gesellschaft zur Förderung der angewandten Forschung e.V. (FHG), Germany
6. Wirtschaftsuniversität Wien (WUW), Austria
7. Universität für Bodenkultur, Zentrum für Soziale Innovation (CSI), Austria
8. École Polytechnique Fédérale de Lausanne (EPFL), Switzerland
9. Eigenössische Technische Hochschule Zürich (ETHZ), Switzerland
10. Politecnico di Milano (POLIMI), Italy
11. Jožef Stefan Institute (JSI), Slovenia
12. Universidad Politécnica de Madrid (UPM), Spain
13. Kungl. Tekniska Högskolan (KTH), Sweden
14. National Centre for Scientific Research "Demokritos" (NCSR), Greece
15. Institut National des Télécommunications (INT), France
16. Hautes Etudes Commerciales (HEC), France
17. Technische Universiteit Eindhoven (TU/e), Netherlands
18. Rheinisch-Westfälische Technische Hochschule Aachen (RWTH), Germany
19. Helsinki University of Technology (HUT), Finland
20. imc information multimedia communication AG (IMC), Germany
21. Open Universiteit Nederland (OU NL), Netherlands

Document Control

Title:	Conzilla-based Conceptual Model of the PROLEARN Roadmapping process
Author/Editor:	Ambjörn Naeve & Hannes Ebner
E-mail:	amb@nada.kth.se , hebner@nada.kth.se

AMENDMENT HISTORY

Version	Date	Author/Editor	Description/Comments
1	2006-01-29	Ambjörn Naeve	First Version
2	2007-01-31	Ambjörn Naeve & Hannes Ebner	Second Version

Contributors

Name	Institution
Ambjörn Naeve	KTH, Sweden
Hannes Ebner	KTH, Sweden
Matthias Palmér	KTH, Sweden
Vana Kamtsiou	NCSR Democritos, Greece
Peter Scott	Open University, UK
Paul Lefrère	Open University, UK
Jacques Dang	HEC, France
Tapio Koskinen	HUT, Finland
Erik Duval	KUL, Belgium
Volker Zimmermann	IMC, Germany
Lampros Stergioulas	Brunel University, UK
Daniel Burgos	Open University, NL
Katherine Maillet	INT, France
Ralf Klamma	RWTH, Germany
Amine Chatti	RWTH, Germany

Legal Notices

The information in this document is subject to change without notice.

The Members of the PROLEARN Consortium make no warranty of any kind with regard to this document, including, but not limited to, the implied warranties of merchantability and fitness for a particular purpose. The Members of the PROLEARN Consortium shall not be held liable for errors contained herein or direct, indirect, special, incidental or consequential damages in connection with the furnishing, performance, or use of this material.

**CONZILLA-BASED CONCEPTUAL MODEL
OF THE PROLEARN ROADMAPING PROCESS**

VERSION 2

www.conzilla.org/wiki/Online/RM

2007-01-31

TABLE OF CONTENT

1. INTRODUCTION	3
2. ROADMAPING KNOWLEDGE CREATION BY GAP ANALYSIS.....	3
3. UPDATING THE VISION STATEMENTS THROUGH GAP ANALYSIS	5

1. INTRODUCTION

The present deliverable (D12.14) represents the second version of the Conzilla-based conceptual model of the Prolearn roadmapping process. It is an updated version of the online deliverable D12.7, which is available at www.conzilla.org/wiki/Online/RM. This is a live electronic document, and since D12.7 contains an explanation of what Conzilla is about, and a navigational instruction on how to operate and navigate the model, what follows below are some screenshots that illustrate the updates that have taken place. To appreciate the full version the reader of this paper must become a navigator of the online model.

2. ROADMAPPING KNOWLEDGE CREATION BY GAP ANALYSIS

The Gap analysis process has been described in several other deliverables - including D12.7. During 2006 it has been carried out through a series of events that have been represented in the *Roadmapping Timeline map* (Figure 2). It represents a chronological perspective on how our SECI-based knowledge creation process has been carried out during 2006 (Figure 1).

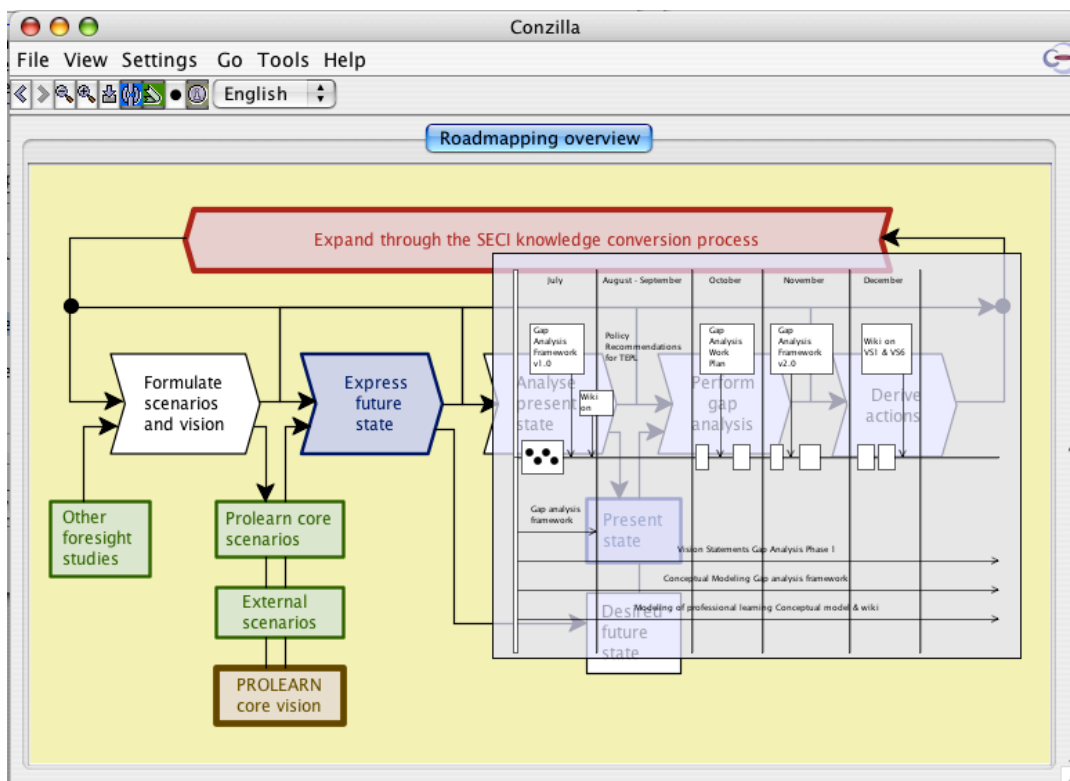


Figure 1. The Roadmapping Timeline map as a detailed map of our Roadmapping SECI process

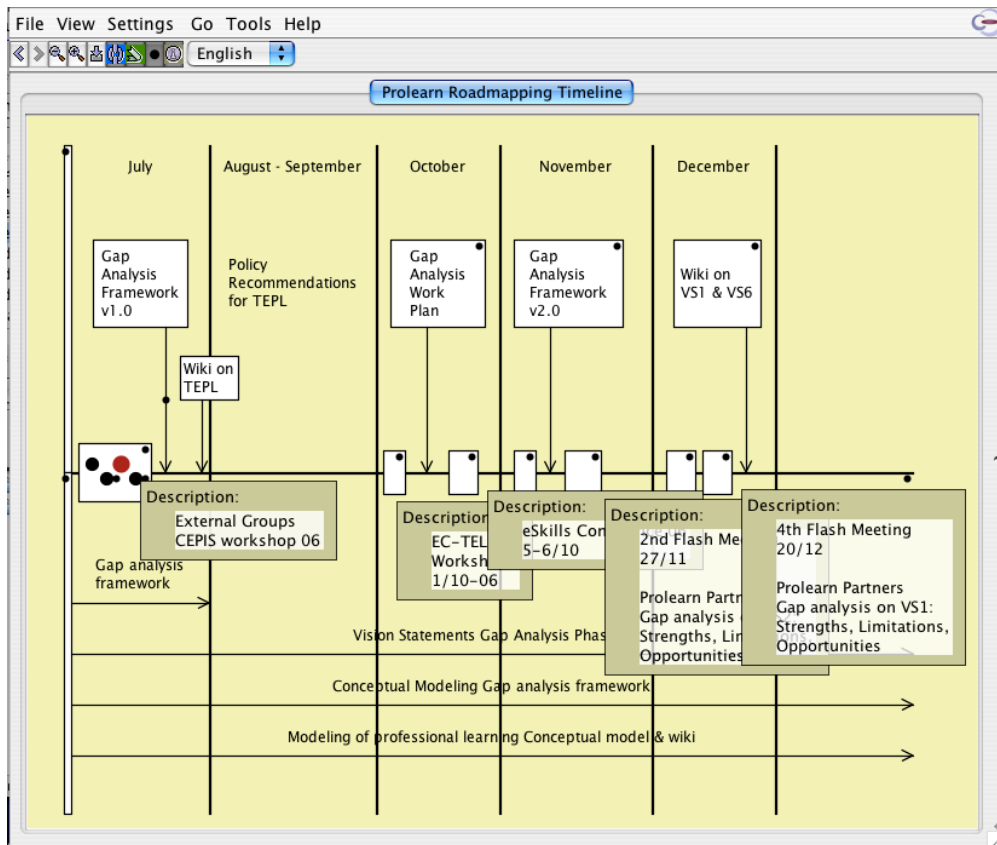


Figure 2. The Roadmapping Timeline map. (The black dots show which objects that contain additional information).

3. UPDATING THE VISION STATEMENTS THROUGH GAP ANALYSIS

The Gap analysis has resulted in updated versions of the Vision statements 1 to 6 from D12.7. The updated vision statements have been added to the model and are “surfable” on the “Prolearn core vision” concept – as shown in Figure 3

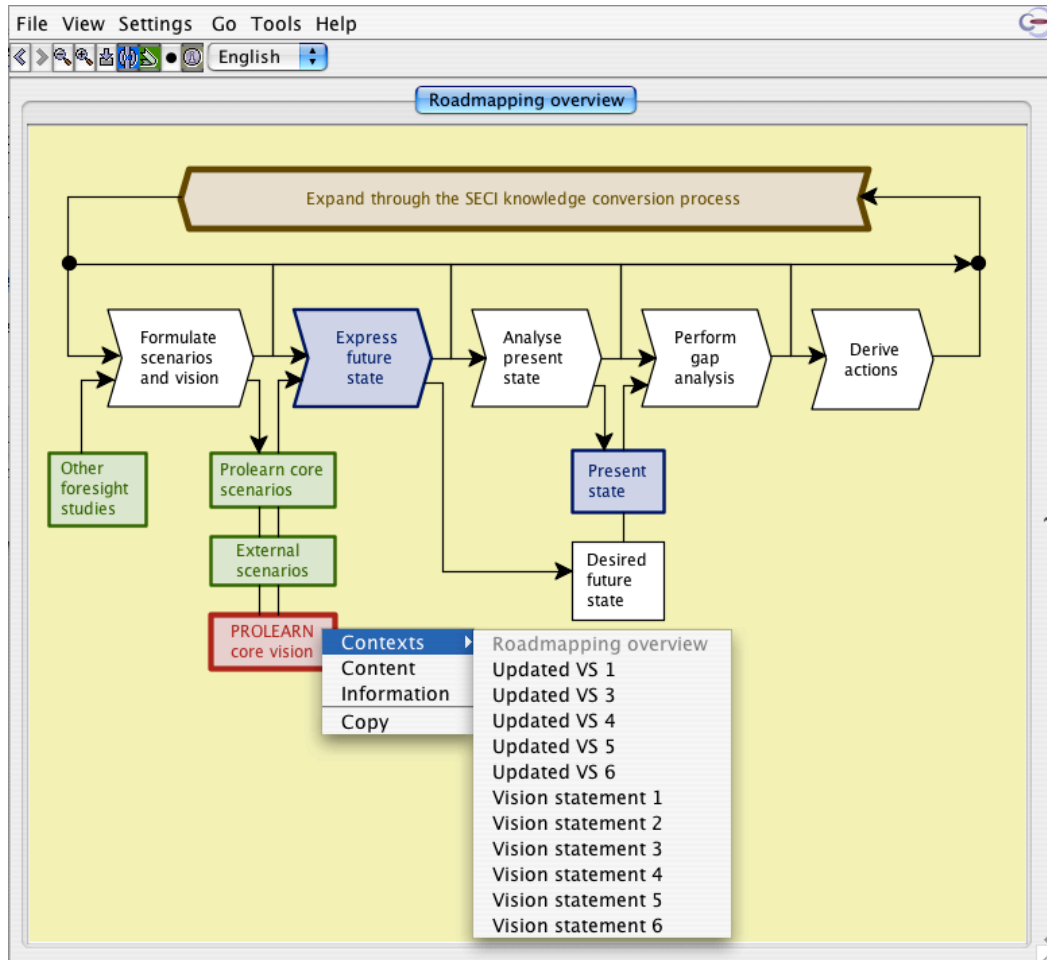


Figure 3. The updated vision statements are reachable by surfing on the Prolearn core vision.

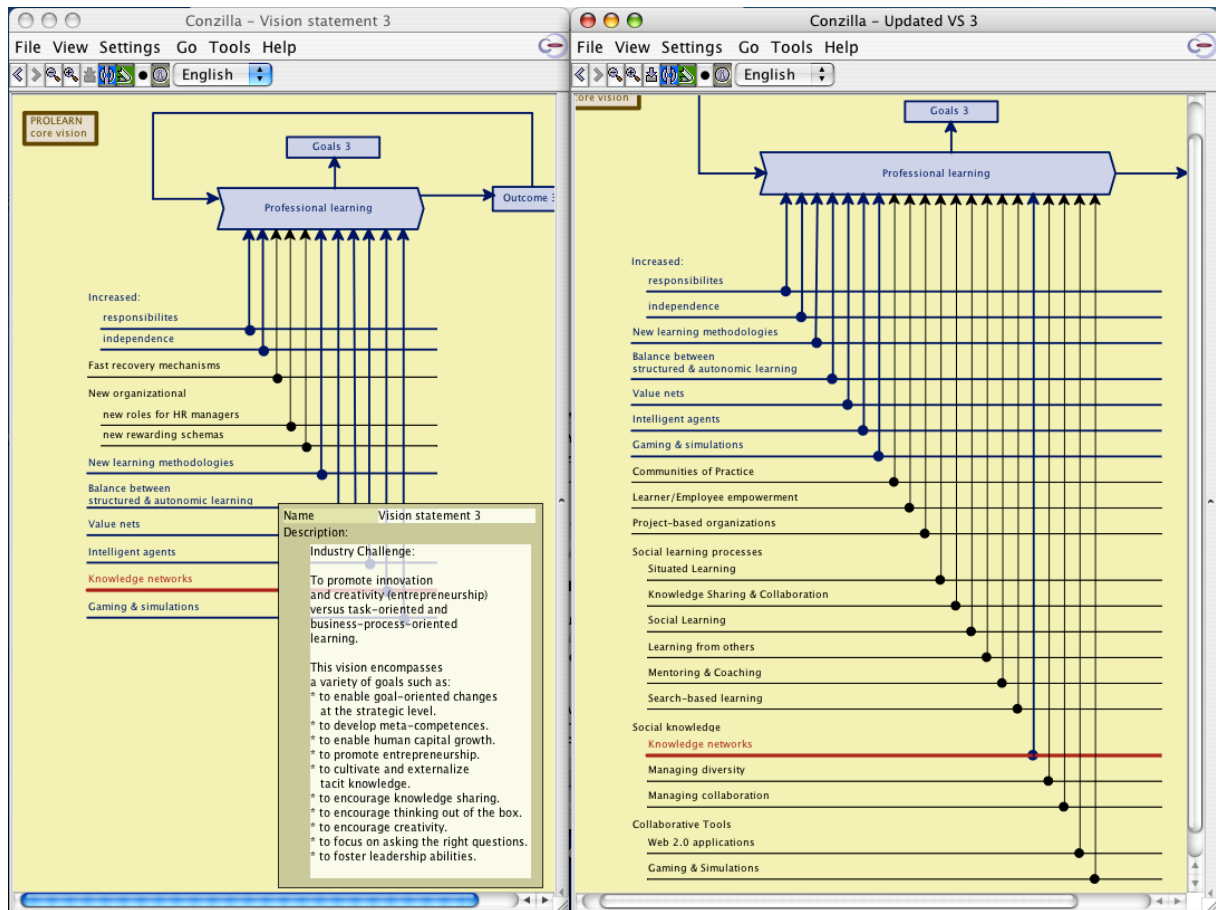


Figure 4. Vision Statement 3 and its updated version

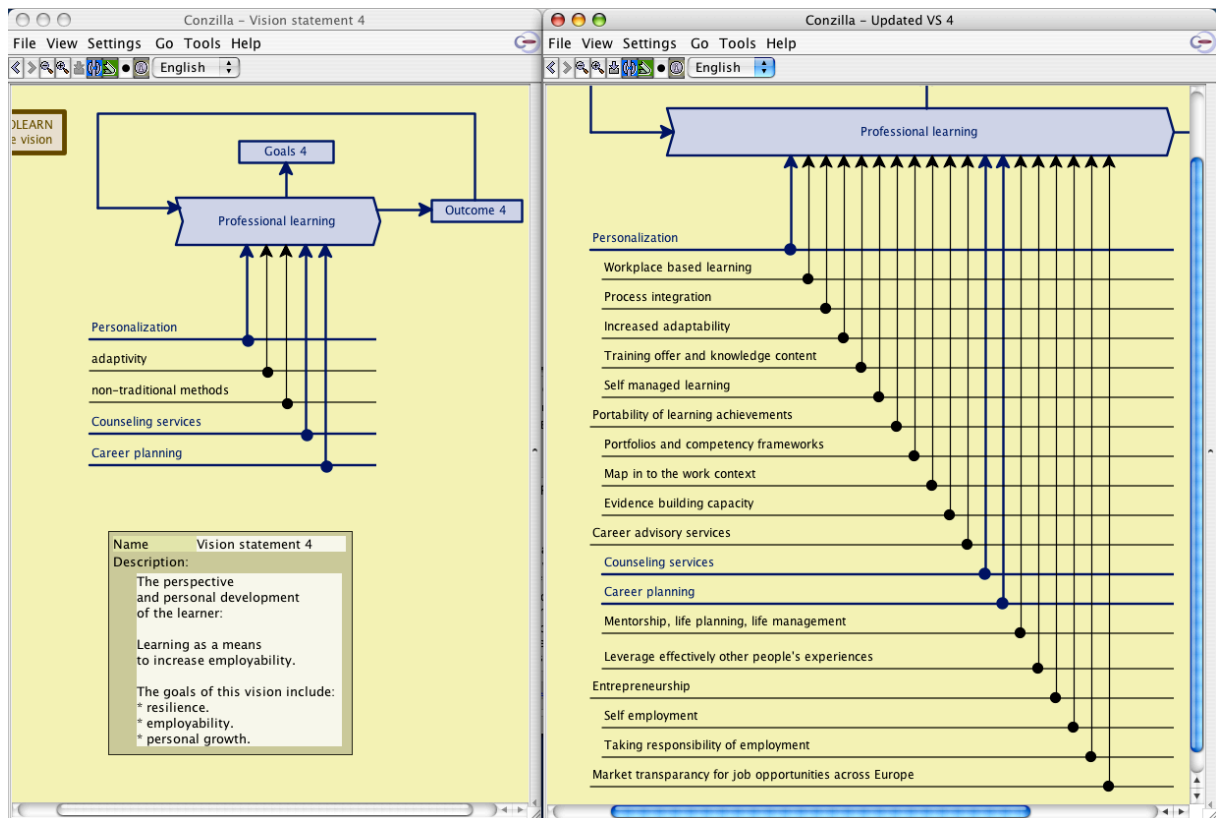


Figure 5. Vision Statement 4 and its updated version

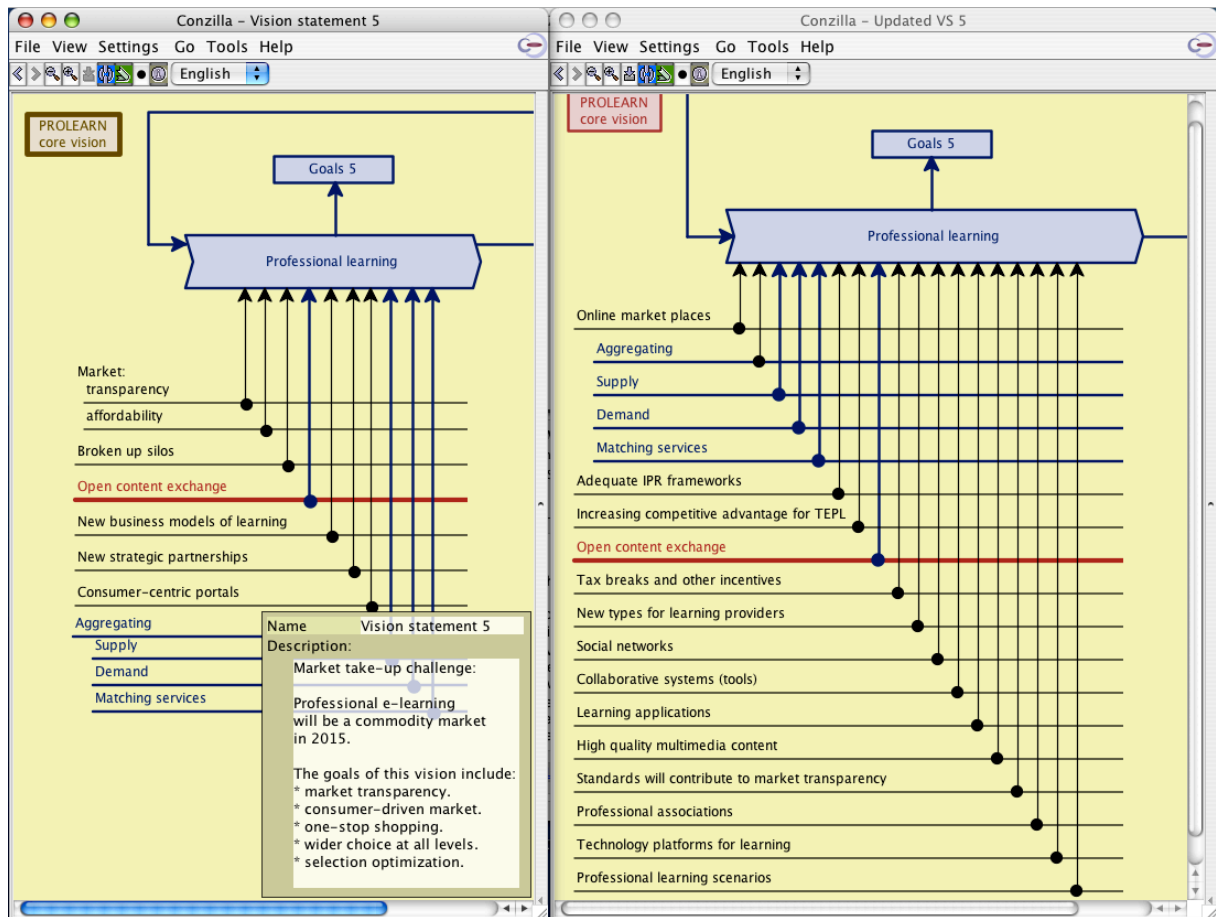


Figure 6. Vision Statement 5 and its updated version

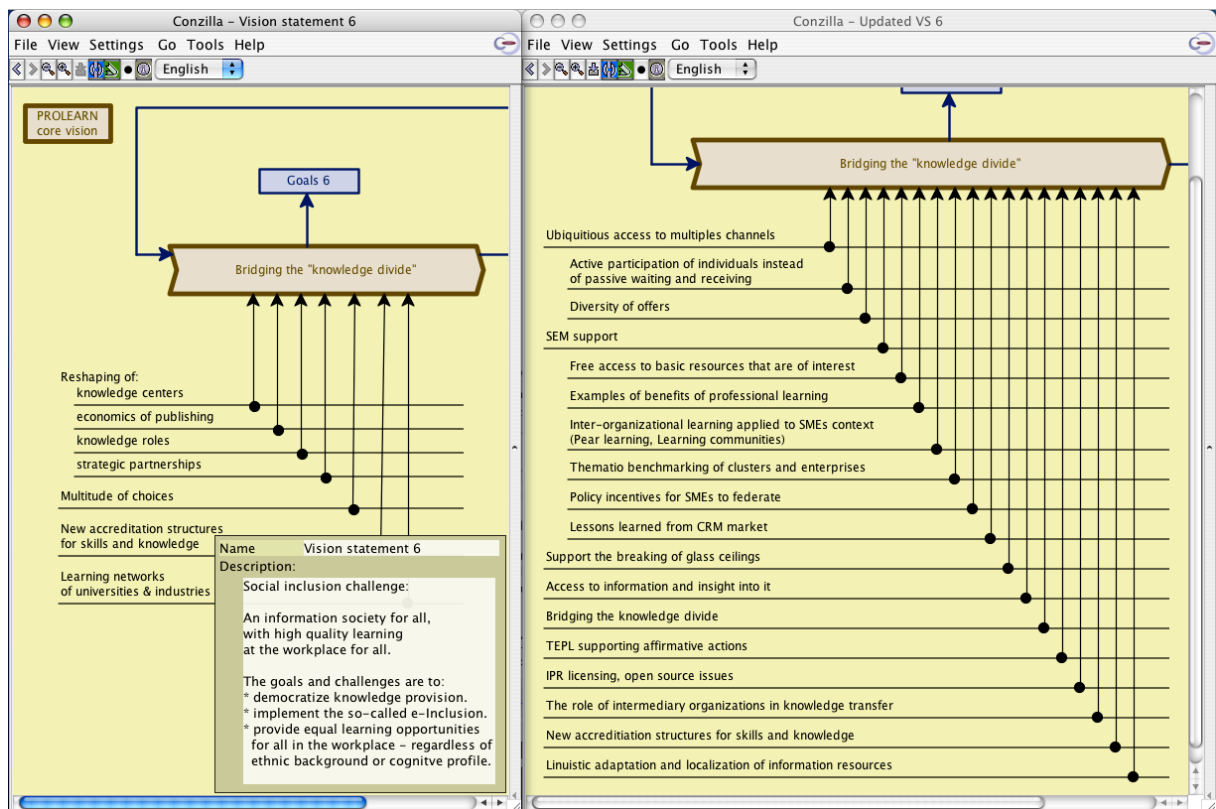


Figure 7. Vision Statement 6 and its updated version